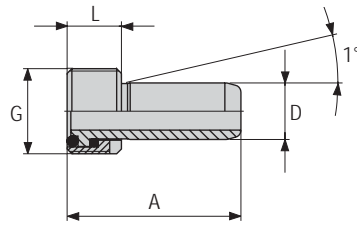


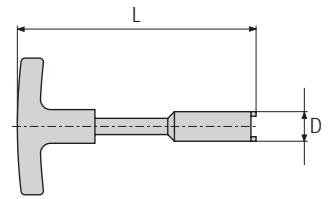
Accessories for HSK-A 63



Coolant tube

HSK-A size	A	L	G	D	Order No.
63	36,6	11,5	M18x1	12	MN5218-08

Supply includes: Coolant tube with two O rings and locking collar.
Design: Easy access angular movement 1° self-centering, axial – sealed.
Note: Design to DIN 69893.



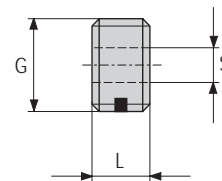
Assembly key

HSK-A size	L	D	Order No.
63	182	17	10040110

Use: For fitting and removing coolant hose.

Dummy plug

HSK-A size	L	S	G	Order No.
63	11,5	8	M18x1	SB63-08R



Use: For closing off threaded hole in HSK tool shanks when no coolant hose is used.
Design: With Nylok sleeve to hold plug securely.
Material: Stainless steel.

Screwdrivers/Keys for MAPAL Single- and Twin-Bladed Reamers

Screwdriver for MAPAL screw spindle MN 618

Screw spindle MN 618	Hexagonal key Key width	
	SW 1,5	SW 2,0
M3LH/RHx5	○	
M3LH/RHx6	○	
M4x0,5LH/RHx6,5		○
M4x0,5LH/RHx9		○

Screwdriver for Torx screw

Torx screw	Torx screwdriver size		
	TX 5	TX 6	TX 7
M1,6x3,9	○		
M1,6x4,4	○		
M2x4		○	
M2x5		○	
M2,5x4,8			○
M2,5x5,2			○

Note: The screwdrivers/keys are included in the supply when ordering reamers.

Screwdriver for MAPAL threaded pin MN 620

Adjusting screw MN 620	Hexagonal key/Key width			
	SW 0,9	SW 1,3	SW 2,0	SW 3,0
M2x1,8	○			
M2x2	○			
M2x2,5	○			
M2x3	○			
M2,5x2,2		○		
M2,5x2,5		○		
M2,5x3		○		
M2,5x4		○		
M3x2,5		○		
M3x3		○		
M3x4		○		
M3x6		○		
M4x3			○	
M4x4			○	
M4x5			○	
M4x6			○	
M4x8			○	
M6x10				○
M6x12				○
M6x15				○

Order Example for MAPAL WP and HX Reamers

Please provide the following details when ordering:

Example 1 Order details for MAPAL WP Reamers

Name	Guide pad grade	Production Ø	Tolerance	Cutting lead code <small>(see page 77 for selection)</small>
			IT or dimensions	
MN 2002	Carbide	12	H 6	AD

Example 2 Order details for MAPAL HX Reamers

Name	Guide pad grade	Production Ø	Tolerance	Cutting lead code <small>(see page 79 for selection)</small>
			IT or dimensions	
MN 6123	PCD	38	+0,009 -0,007	5

Note: If you are unable to provide details of cutting lead code and top rake, please give type of material to be machined.

Please state required guide pad grade (carbide, Cermet or PCD).

Order Example for MAPAL WP and HX Indexable Blades

Please provide the following details when ordering:

Example 1 Order details for MAPAL WP blade: AS92RON

Cutting lead form <small>(see page 76 for selection)</small>	Blade size	Cutting direction <small>(see page 76 for selection)</small>	Top rake <small>(see page 77 for selection)</small>	Cutting material <small>(see page 77 for selection)</small>
AS	92	R	0	N

Example 2 Order details for MAPAL HX blade: HX25RS3CT3

Blade form	Blade size	Cutting lead <small>(see page 79 for selection)</small>	Cutting direction <small>(see page 79 for selection)</small>	Cutting edge <small>(see page 79 for selection)</small>	Top rake <small>(see page 79 for selection)</small>	Cutting material <small>(see page 78 for selection)</small>
HX	2	5	R	S	3	CT3