

GIGA-Drill, alteration to standard product



Please copy, complete and return (only 1 tool per enquiry questionnaire/order).

Request Order

Company _____ Customer number (if available) _____

Contact partner _____ Tel./Fax _____ E-Mail _____

Address _____

MAPAL Inc.
 4032 Dove Road
 48060 Port Huron MI
 USA
 Phone +1 / 8 10 / 3 64 80 20
 Fax +1 / 8 10 / 3 64 47 50
 sc-tools@us.mapal.com
 www.mapal.us

Number of drills _____ Delivery date required (non-binding) _____ Week _____

Please describe your machining task for us and the special tool you require:

Material to be machined:

Bore: Through hole
 Blind bore

Machining method: wet dry
 min.lubrication

Coolant supply: Ext. Int.

Grey cast iron
 Alloyed grey cast iron
 Nodular iron
 CGI
 Malleable iron
 Aluminium (Si content > 10 %)
 Aluminium (Si content < 10 %)

Copper
 Brass
 Bronze



Hardness (HRC, HB, etc.): _____ Tensile strength (N/mm²): _____ Standard: _____ Standard No.: _____

MAPAL code (e.g. M2195): _____

Cutting direction: R.H. L.H.
 (if not stated we will assume R.H.)

Coating:
 (if you wish to choose yourself)

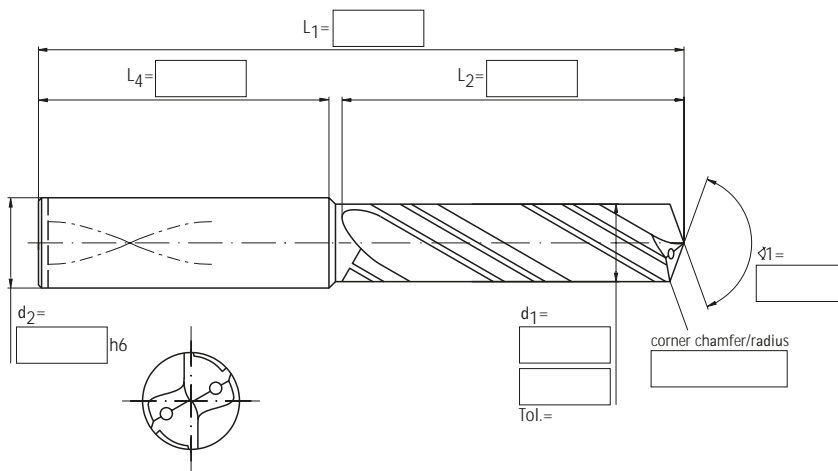
MxF
 MxH
 TiAlN
 uncoated

Shank form:

HA (DIN 6535) 

HB (DIN 6535) 

HE (DIN 6535) 



Date _____ Signature _____

Please do not write in this box, which will be completed by MAPAL specialists.

Groove form: MEGA
 GG
 ALU
 INOX

Coating: MxF
 MxH
 TiAlN
 uncoated

Radial land on face: Radial land on taper surface
 Radial land on 4 faces
 Round point
 Spiral point

Blank (MC): _____